

# ASI Technologies, Inc.

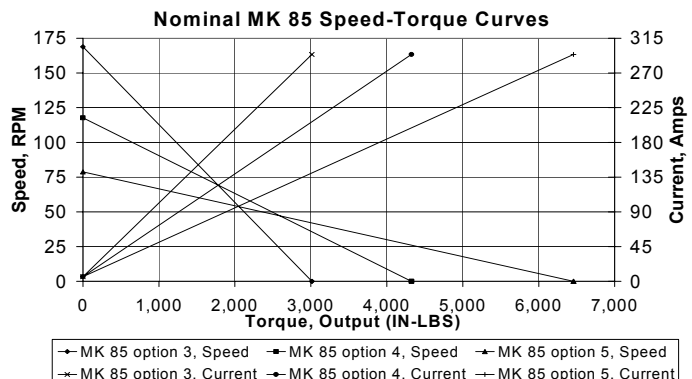
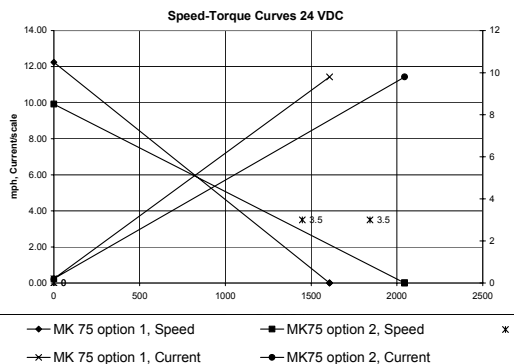
## MK 85 SERIES

### 24 VOLT GEAR DRIVE SYSTEMS

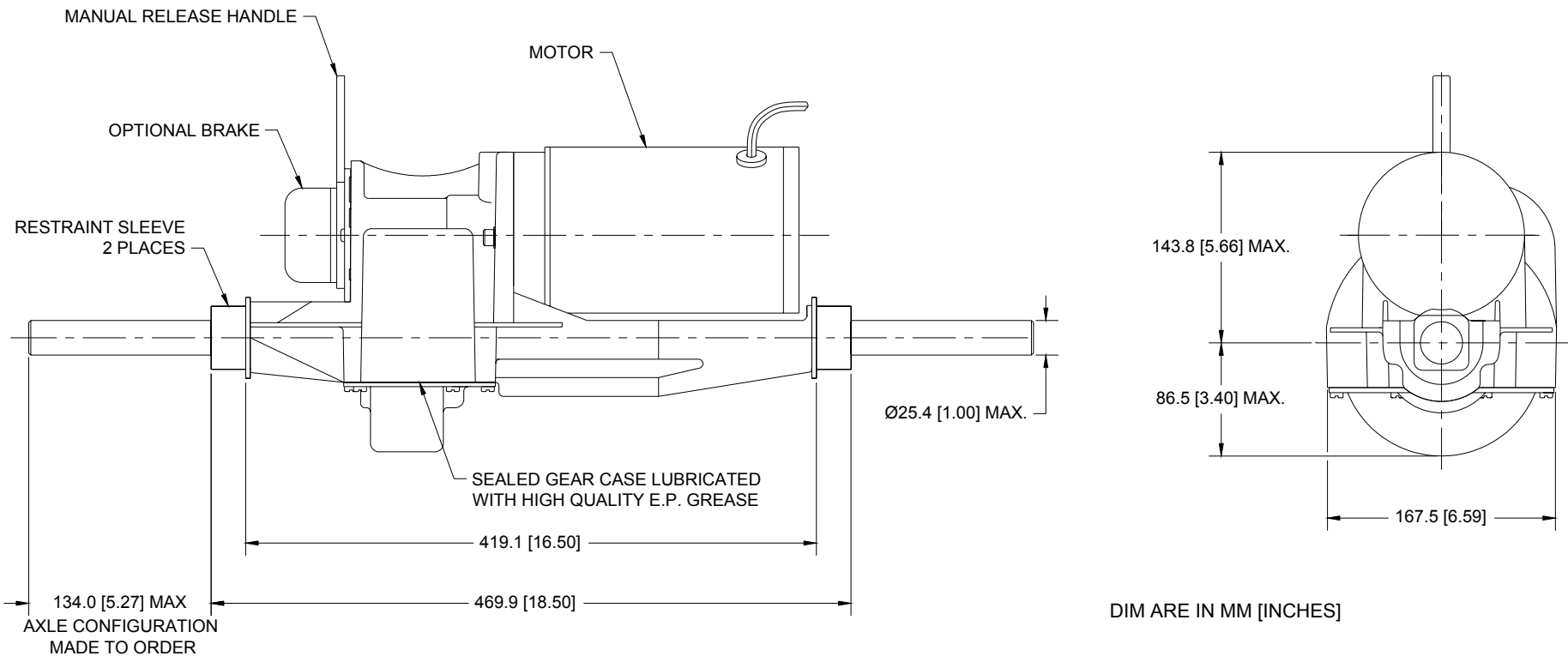


The MK 85 incorporates high strength gearing in our standard die cast housing. Vehicle weights up to 1500 lbs and speeds of up to 12 mph are possible due to the large ratio variations offered by this unique and compact drive system. Motor, electro-magnetic brake, harnessing, connectors, gear reduction and differential are included in one easy-to-install package. Detailed on this sheet are standard units. Other motors, voltages and ratios are available. Axle configurations are made to order, including hubs, if required. Please contact the factory for more information.

Unit type		MK75	MK75	MK85	MK85	MK85
Option		1	2	3	4	5
Voltage		24	24	24	24	24
No Load Speed, RPM		317	250	170	120	76
Maximum continuous operating point (Motor Limited)						
Torque	In-Lbs.	179	240	335	480	718
Speed	RPM	290	226	155	108	72
Current	Amps	38	38	38	38	38

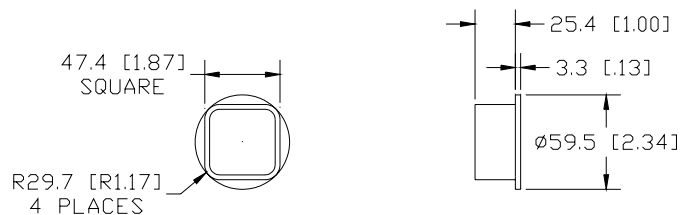


# MK 50/60 SERIES GEAR DRIVE SYSTEM



## NOTES

1. PREFERRED MOUNTING IS WITH MOTOR ON RIGHT SIDE LOOKING FORWARD.
2. MAX. ALLOWABLE GROSS VEHICLE WEIGHT IS DEPENDENT ON MAX SPEED, CONSULT FACTORY.
3. HOUSING MATERIAL IS DIE CAST ALUMINUM; AXLES ARE STEEL ALLOY.
4. WEIGHT OF TRANSAXLE IS 22.7 KG [50.0 LBS] WITH MOTOR AND BRAKE.
5. THIS GEARBOX IS SEALED AND LUBRICATED FOR LIFE. NO MAINTENANCE IS REQUIRED.
6. ESTIMATED GEARBOX EFFICIENCY GREATER THAN 95%
7. THE SUITABILITY OF THIS TRANSAXLE FOR A SPECIFIC APPLICATION IS THE RESPONSIBILITY OF THE PURCHASER.
8. EXCESSIVE ACCEL AND DECEL CAN ADVERSELY EFFECT THE LIFE AND INTEGRITY OF THE UNIT.



**RESTRAINT SLEEVE**



**ASI TECHNOLOGIES INC**  
**GEAR DRIVE SYSTEMS**

**209 Progress Drive**  
**Montgomeryville, PA 18936 USA**

**Voice: +1.215.661.1002**  
**Fax: +1.215.661.1009**  
**www.asidrives.com**