

ASI Technologies, Inc.

MK400 SERIES GEAR DRIVE SYSTEMS



The ASI MK400 series transaxle combines the precision of a single piece casting, which improves the accuracy of gear center distance, with the mounting width flexibility of a two piece casting. This results in improved gear alignment and quieter transaxle performance. Mounting width flexibility is achieved with a separate, fully enclosed, axle extension.

Using standard parts, widths from 238.0 mm (9.37 inch) to 355.6 mm (14.00 inch) are available. Utilizing custom tooled parts, widths above 355.6 mm (14.00 inch) are easily achieved. Motors from 76 mm (3.0 inch) to 101 mm (4.0 inch) diameter are compatible. All MK400 transaxles have fully enclosed axle systems. To emphasize, unlike competitor units, the axles on the 101 mm (4.0 inch) diameter motor version are completely enclosed. Ratios from 12.0:1 to 21.0:1 are available to meet your transaxle performance requirements.

Systems include motor, electro-magnetic brake, harnessing, connectors, gear reduction and differential in one easy-to-install package. Axle configurations are made to order, including hubs, if required. Please contact the factory for more information or technical assistance.



ASI Technologies

www.asidrives.com

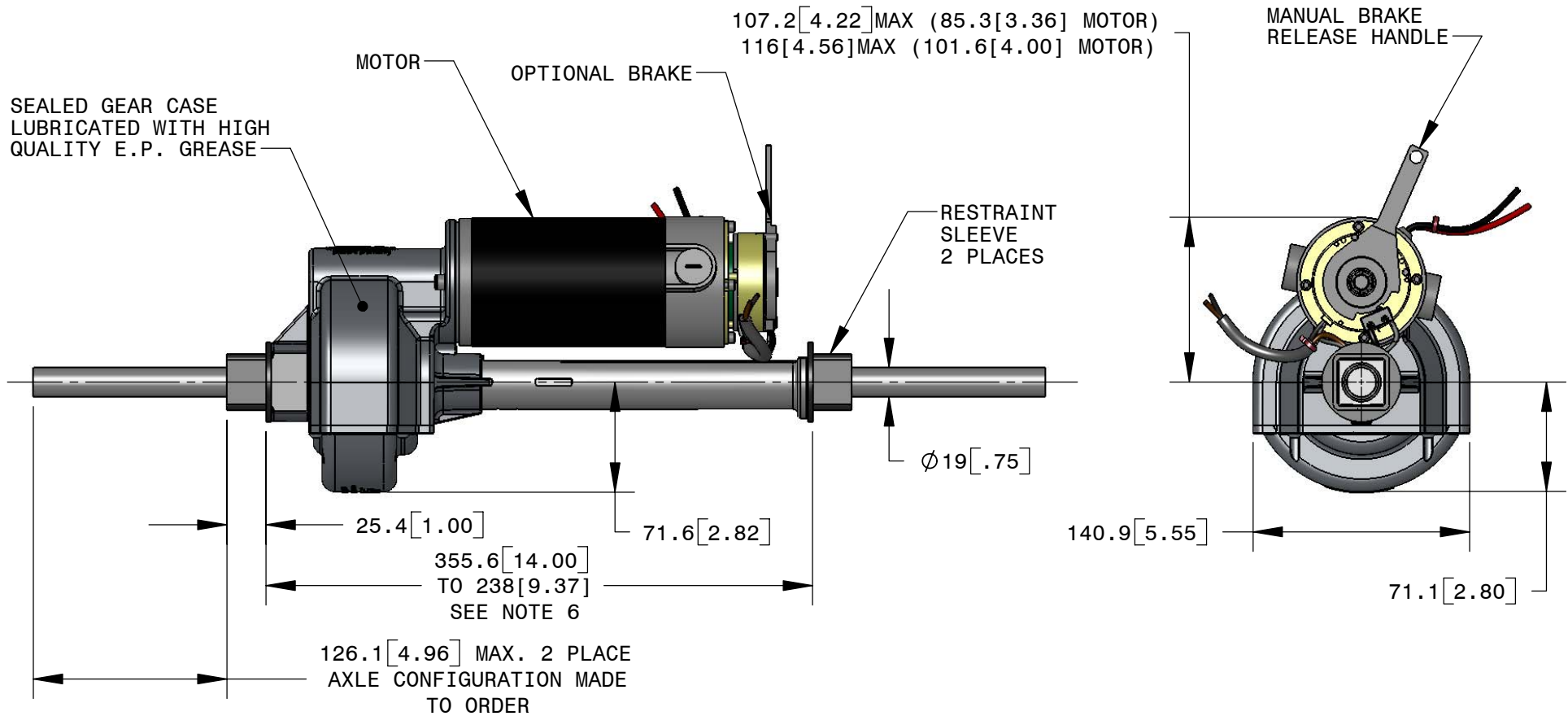
209 Progress Drive Montgomeryville, PA 18936 USA

+1.215.661.1002 fax +1.215.661.1009

Main Email: sales@asidrives.com

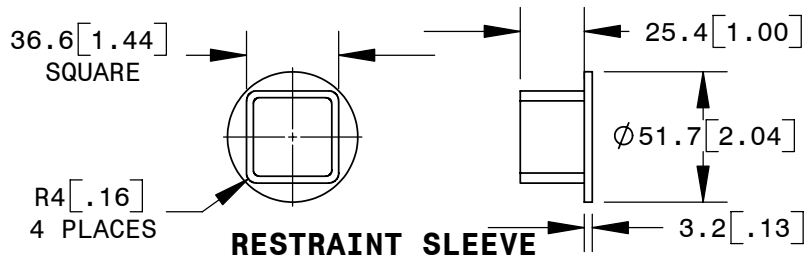
Europe Email: PTurney@asidrives.com

MK400 SERIES GEAR DRIVE SYSTEM



NOTES:

1. MAX. ALLOWABLE GROSS VEHICLE WEIGHT IS DEPENDENT ON SPEED, CONSULT FACTORY.
2. HOUSING MATERIAL IS DIE CAST ALUMINUM; AXLES ARE STEEL ALLOY.
3. WEIGHT OF TRANSAXLE IS 8.94 KG[19.7 LBS] WITH MOTOR AND BRAKE.
4. THIS GEARBOX IS SEALED AND LUBRICATED FOR LIFE. NO MAINTENANCE IS REQUIRED.
5. ESTIMATED GEARBOX EFFICIENCY GREATER THAN 95%
6. STANDARD LENGTHS FROM 238[9.37] TO 355.6 [14.00] LARGER LENGTHS FOR CUSTOM APPLICATIONS ARE POSSIBLE.



ASI TECHNOLOGIES INC
GEAR DRIVE SYSTEM

209 PROGRESS DRIVE
MONTGOMERYVILLE, PA 18936 USA

VOICE: +1.215.661.1002
FAX: +1.215.661.1009
www.asidrives.com