

# LIGHTNING 100

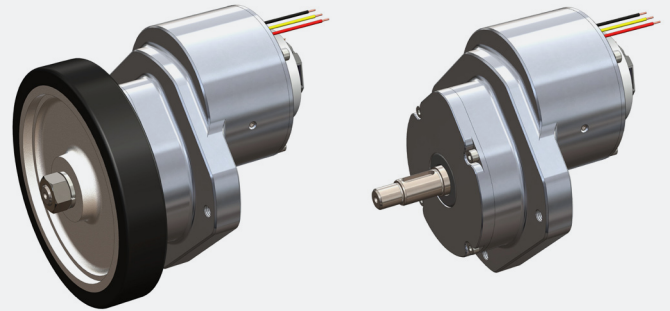
Brushless Wheel Drive



Mobile Robots  
& AGVs



Floor  
Care



## FEATURES

**Optional components:** Electromagnetic power-off brake, internal encoder, connectors, wheel

**Voltage:** 24V DC

**Motor:** Brushless DC

**Sealed drive system:** Compact, designed for indoor use

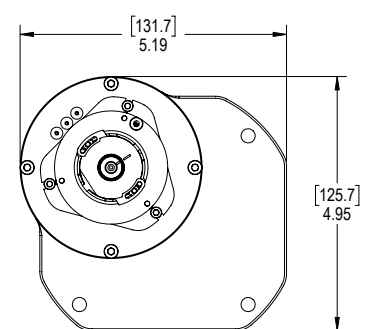
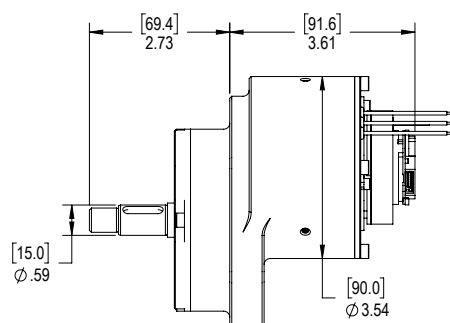
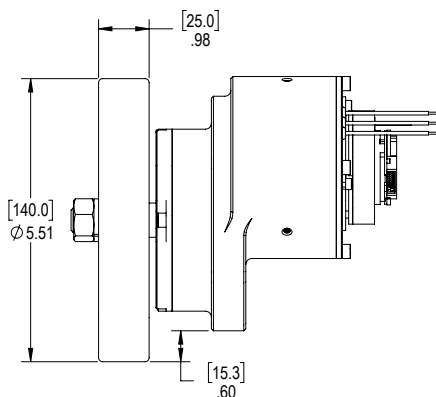
**Axle diameter:** Up to .67 in [17 mm]

**Gear set:** Single-stage helical

**Reduction ratio:** 10:1 or 14:1

## PERFORMANCE EXAMPLE

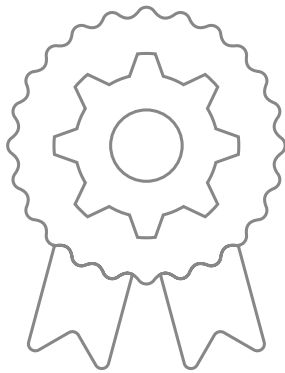
High Speed			
	No Load	Peak Efficiency	Peak Power
<b>Torque, Nm</b>	0	3	13
<b>Speed, rpm</b>	225	197	112
<b>Current, Amps</b>	0.5	3.7	13.2
<b>Power Out, Watts</b>	0	67	153
<b>Power In, Watts</b>	12	88	318
<b>Efficiency, %</b>	0	76	48





Lasting solutions to drive your machines. More than industrial designers and engineers, we're a team of passionate problem solvers. ASI Drives: Gear drive systems for battery powered machines up to one ton.

# OUR CUSTOMERS HAVE BEEN WITH US FOR OVER **15 YEARS ON AVERAGE BECAUSE OF OUR:**



## **DEEP EXPERTISE:**

Creating over 740 tailored engineered solutions

Offering cost sensitive designs with manufacturing efficiencies

A history of innovation recognized with 7 awarded patents

In-house gear manufacturing offers supply chain predictability



## **OUR 40-YEAR COMMITMENT:**

Excellent customer service

"Best in class" partnership with OEM industry leaders

Our entrepreneurial size ensures personal executive level accountability and responsiveness



## **DEEP INDUSTRY KNOWLEDGE & FOCUS:**

Insights and solutions to your specific challenges & opportunities

We know your competitive landscape

**EXPERIENCE THE DIFFERENCE OUR DEDICATION TO INNOVATION, QUALITY AND SERVICE MAKES.**

Contact us at [sales@asidrives.com](mailto:sales@asidrives.com) to explore how we can quickly solve your most pressing challenges.

