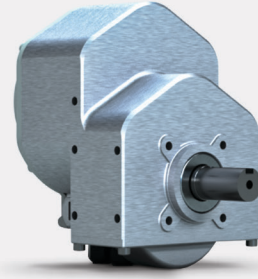


# STORM 400

Brushless Wheel Drive



Mobile  
Robots  
& AGVs



## FEATURES

**Sealed drive system:** Rugged; usable outdoors

**Optional components:** Electromagnetic power-off brake, internal encoder, safety encoder, connectors, brake cover, IP67 conformity

**Encoder options available:** Shaft and axle encoders available

**Voltage:** 24V DC

**Motor:** Brushless DC

**Lead Exit:** 3 optional locations and 2 directions available

**Axle Material:** Stainless steel or hardened carbon steel

**Axle Diameter:** Up to 20 mm diameter

**Gear:** Single stage helical

**Reduction ratio:** 12.2:1 or 25.3:1

**Brake options available:** 6 Nm, release lever

## PERFORMANCE EXAMPLES

Low-Speed 24V Option			
	No Load	Peak Efficiency	Peak Power Out
<b>Torque, Nm</b>	0	24.9	95.3
<b>RPM</b>	119	104	60
<b>Current, Amps</b>	2.4	16.0	54.5
<b>Power Out, Watts</b>	0	270	596
<b>Power In, Watts</b>	58	384	1308
<b>Efficiency</b>	0%	70%	46%

High-Speed 24V Option			
	No Load	Peak Efficiency	Peak Power Out
<b>Torque, Nm</b>	0	12.0	46.0
<b>RPM</b>	248	216	124
<b>Current, Amps</b>	2.4	16.0	54.5
<b>Power Out, Watts</b>	0	271	599
<b>Power In, Watts</b>	58	384	1308
<b>Efficiency</b>	0%	71%	46%

