

# STORM 500

Wheel Drive



Mobile  
Robots  
& AGVs



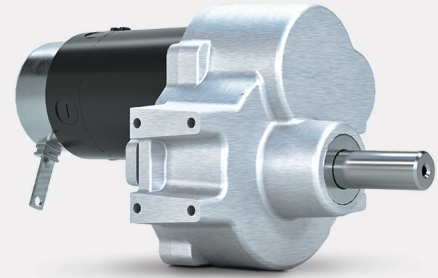
Medical  
Mobility



Material  
Handling



Outdoor Power  
Equipment



## FEATURES

**Sealed drive system:** Rugged; usable outdoors

**Optional components:** Electromagnetic power-off brake, internal encoder, safety encoder, connectors, brake cover, IP67 conformity

**Voltage:** 24V DC

**Motor:** Permanent magnet DC, brushless option

**Axle Material:** Stainless steel or hardened carbon steel

**Axle Diameter:** Up to 25 mm diameter

**Gear:** Two stage helical

**Reduction ratio:** 25:1:1

**Brake options available:** 6 Nm, release lever

## PERFORMANCE EXAMPLES

Performance Data				
	No Load	Peak Efficiency	Peak Power Out	Stall
<b>Torque, Nm</b>	0	26	130	259
<b>RPM</b>	186	167	93	0
<b>Current, Amps</b>	3.5	26.0	116.0	228.6
<b>Power Out, Watts</b>	0	455	1263	0
<b>Power In, Watts</b>	84	624	2785	5486
<b>Efficiency</b>	0%	73%	45%	0%

