

THUNDER 1500

Heavy Duty Dual Stage Wheel Drive



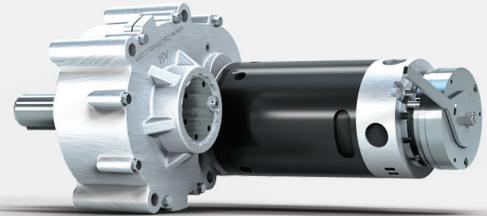
Material
Handling



Mobile Robots
& AGVs



Outdoor Power
Equipment



FEATURES

Sealed drive system: Rugged; usable outdoors

Optional components: Electromagnetic power-off brake, internal encoder, safety encoder, connectors, brake cover, IP67 conformity

Motors: Permanent magnet DC 4-pole, 4.8 in (122 mm) diameter, brushless DC and AC available up to 6.0 in (152 mm) diameter

Encoder options available: Digital position and motion information

Axle: Hardened carbon steel

Gear: Dual stage helical

Reduction ratio: 30.97:1

Voltage: 12V to 48V DC

PERFORMANCE EXAMPLES

	Low-speed 24V Option			High-speed 24V Option			36V Option		
	No Load	Peak Efficiency	Peak Power	No Load	Peak Efficiency	Peak Power	No Load	Peak Efficiency	Peak Power
Torque, Nm	0	101.1	429.5	0	97	385	0.00	90	290
RPM	74	65	37	109	95	54	114.4	97	57
Current, Amps	5.5	40	152.8	8.4	58.2	206.2	6.3	37.5	106.7
Power Out, Watts	0	691	1660	0	967	2194	0	912	1745
Power In, Watts	132	961	3667	202	1398	4949	226.6	1349	3843
Efficiency	0%	72%	45%	0%	69%	44%	0%	68%	45%

