

# SD400

Geared Scrub Brush Motor



Floor  
Care



## FEATURES

**Integral motor casting:** Improved gear alignment; quiet operation

**Construction:** All ball bearing; high efficiency

**Shaft configuration:** Custom up to 20 mm diameter

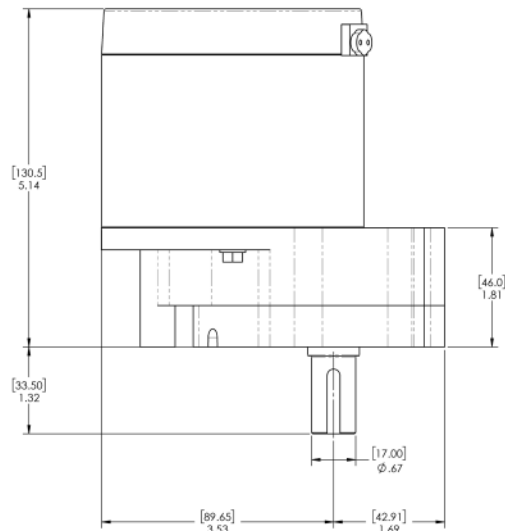
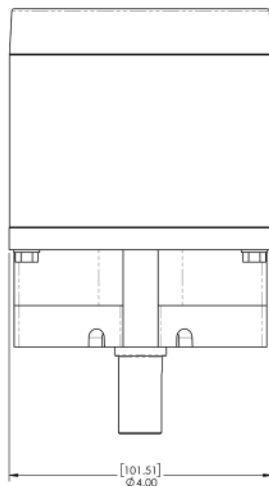
**Motor:** 4-pole, 3.98 in (101 mm) diameter

**Voltage:** 24V DC

**Reduction ratio:** 10:1

## PERFORMANCE EXAMPLE

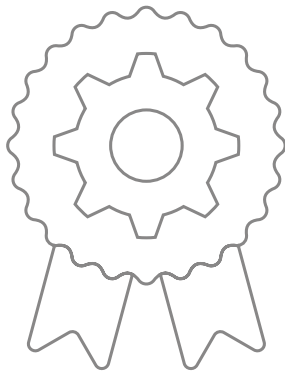
10:1 @ 24V			
	No Load	Typical (Continuous Duty)	High (65% Duty)
<b>Torque, Nm</b>	0.0	5.4	10.0
<b>RPM</b>	251	220	200
<b>Current, Amps</b>	1.5	7.9	14.2
<b>Power Out, Watts</b>	0	125	209
<b>Power In, Watts</b>	35	191	341
<b>Efficiency</b>	0%	65%	61%





Lasting solutions to drive your machines. More than industrial designers and engineers, we're a team of passionate problem solvers. ASI Drives: Gear drive systems for battery powered machines up to one ton.

# OUR CLIENTS HAVE BEEN WITH US FOR **OVER 14 YEARS BECAUSE OF OUR:**



## **DEEP EXPERTISE:**

Creating over 740 tailored engineered solutions

Offering cost sensitive designs with manufacturing efficiencies

A history of innovation recognized with 7 awarded patents

In-house gear manufacturing offers supply chain predictability

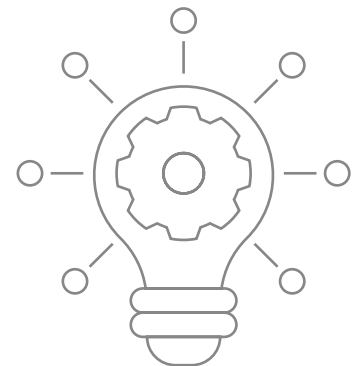


## **OUR 38-YEAR COMMITMENT:**

Excellent customer service

"Best in class" partnership with OEM industry leaders

Our entrepreneurial size ensures personal executive level accountability and responsiveness



## **DEEP INDUSTRY KNOWLEDGE & FOCUS:**

Insights and solutions to your specific challenges & opportunities

We know your competitive landscape

**EXPERIENCE THE DIFFERENCE OUR DEDICATION TO INNOVATION, QUALITY AND SERVICE MAKES.**

Contact us at [sales@asidrives.com](mailto:sales@asidrives.com) to explore how we can quickly solve your most pressing challenges.

